

Pulsonix Vault

Overview

The Pulsonix Vault enables true revision and access controls over your Schematic Designs, Hierarchical Blocks, PCB Designs, Panels, Technology Files and Pulsonix Libraries. This allows you to use known and verified data in a controlled manner, ensuring accuracy and reducing time to market by not needing to verify items each and every time you use them in your designs.

By its nature, the Pulsonix Vault leads to collaborative working by ensuring no two users can be accessing and amending the same data, at the same time.

Revision History

Access full revision history over your Pulsonix data using the Pulsonix Vault. Automatic versioning of your designs, libraries and Technology files in a controlled manner ensures accuracy and allows for coherent design practises to be managed effectively.

Definable Access Rights

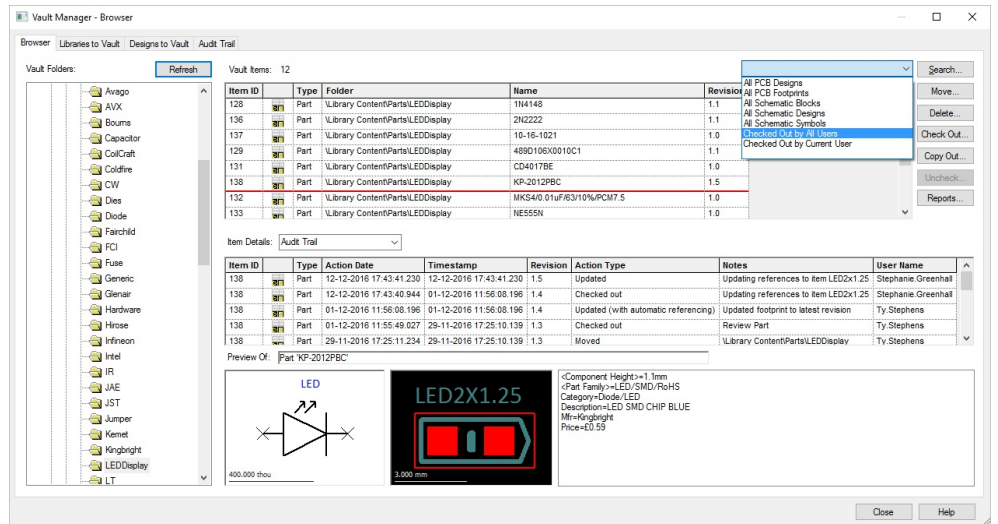
User definable permission levels within the Vault allow you to control who can access, view, edit and save items. Having this functionality helps to ensure you design with known and verified Parts, Hierarchical Blocks, Designs and Technology files.

Audit History

See what changes were made, when they were made and by whom. Users can obtain full reports which can be filtered by user, action type, date and file type to show an audit history for the selected data.

Vault Setup Dialog

The Vault is easily setup using the management dialog. All levels of permissions, grouping and access can be defined here.



Saved Search Capability

The Pulsonix Vault provides you with the ability to save various search configurations allowing for quick and easy access to known filtered items within your Vault.

PDC Vault option

All Vault Parts can have attributes added to them from your corporate database, enabling you to add stock quantity levels, pricing and obsolescence information directly to your parts.

As the Vault is a centralised database, you can also use your Pulsonix Database Connection option to point directly at your Pulsonix Vault for use in Parametric searching and placing within your design if you wish.

Feature Summary:

- Full revision Control for Designs, Library items and Technology files
- 'Where Used' reports
- Search Save capability
- User-defined permissions and access levels
- Preview windows for Parts, Symbols and Footprints
- Fully integrated with Pulsonix Database connection option
- Graphical display of revision changes
- Full audit trail history reporting
- User-definable tree structure

